

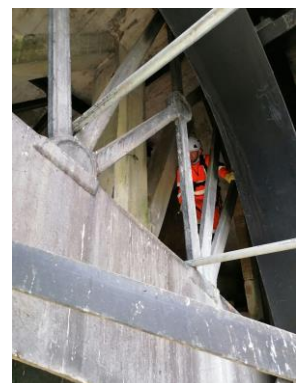


# Maintaining Cleveland Bridge A36



Before any structural repairs can begin, a scaffold has to be erected below the bridge to create a working platform. A floating pontoon was assembled in the river, from which the scaffold can be lifted. This also enables us to keep the bridge in use for traffic under controls.

As working on the river increases the danger, all staff received a briefing from Avon Fire & Rescue regarding 'man overboard' emergency procedures. A safety boat is on stand by at all times when work takes place.



The scaffold utilises 5km of tubing, 12,000 fittings and 500 timber boards, every piece of which has to be lifted into place by hand. When completed, the scaffold will weigh around 45 tons and will be encapsulated in over 600m<sup>2</sup> of flame retardant shrink wrap.