

# Bath & North East Somerset

**Bath & North East  
Somerset Council**

Preparing a warding proposal

*Electoral review briefing for council*

*13 July 2017*

**Website:** [www.lgbce.org.uk](http://www.lgbce.org.uk)

**Have your say:** [consultation.lgbce.org.uk](http://consultation.lgbce.org.uk)

**Follow us:** @lgbce

**Contact us:** [reviews@lgbce.org.uk](mailto:reviews@lgbce.org.uk)

Richard Buck – Review Manager  
Richard.buck@lgbce.org.uk

David Owen – Review Officer  
David.owen@lgbce.org.uk

## We are here to:

- Tell you about the review process
- Tell you about the Commission's policies
- Answer your questions

## We are not here to:

- Tell you what proposals to make
- Receive formal or informal submissions to the review
- Give an undertaking that the Commission will recommend (agree to) any particular proposal

## What

An electoral review determines the following 5 things:

- Total number of councillors
- Total number of wards
- Boundaries of each ward
- Number of councillors elected to each ward
- Names of each ward

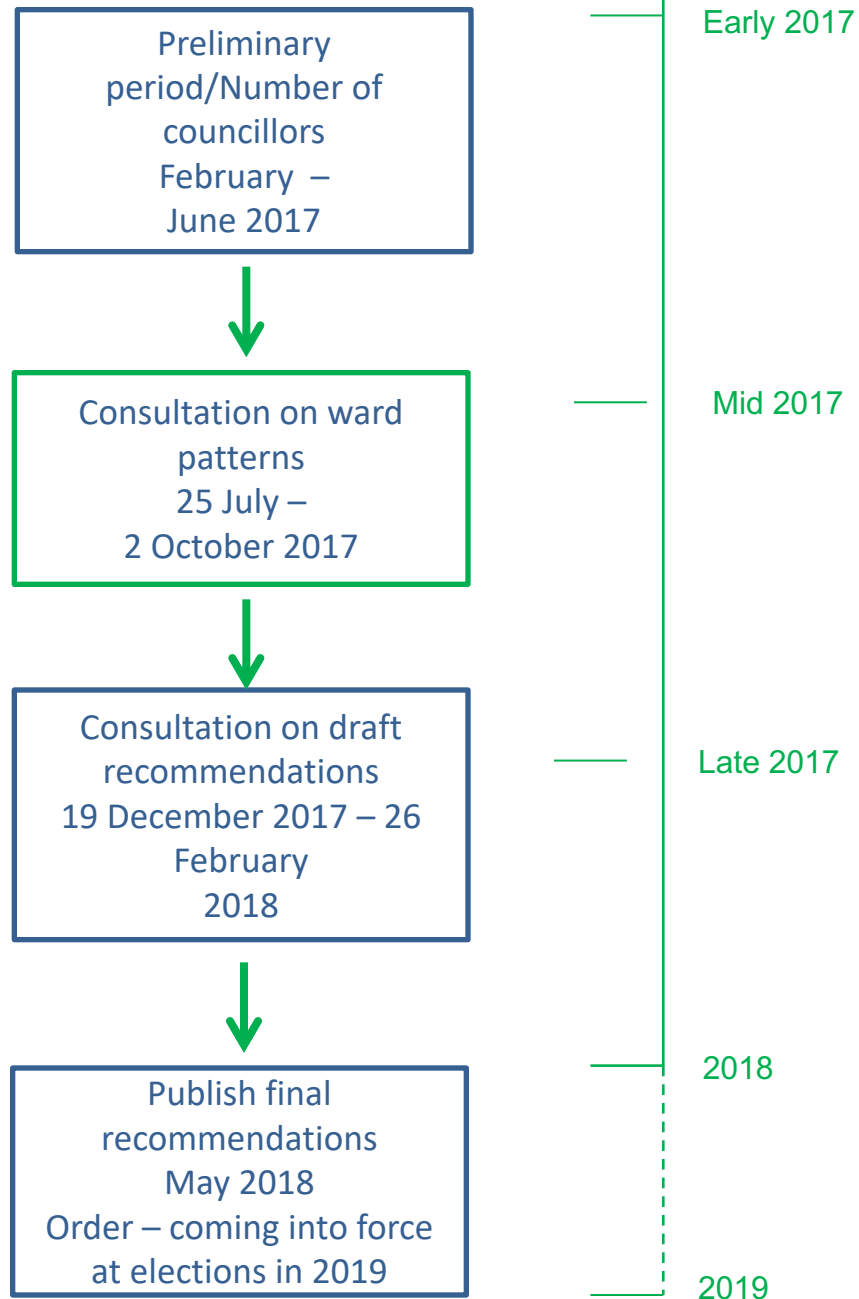
**Website:** [www.lgbce.org.uk](http://www.lgbce.org.uk)

**Have your say:** [consultation.lgbce.org.uk](http://consultation.lgbce.org.uk)

**Follow us:** @lgbce

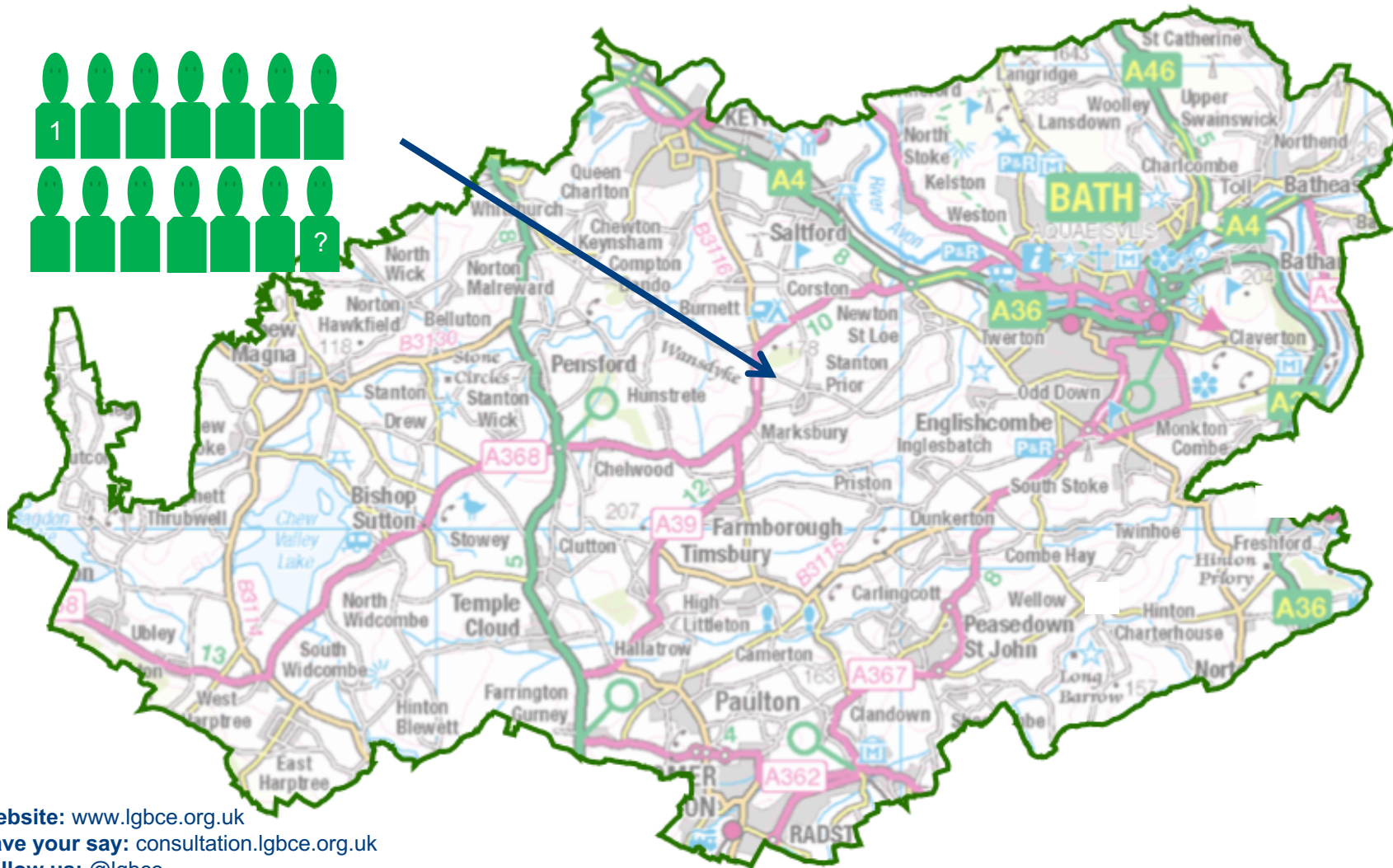
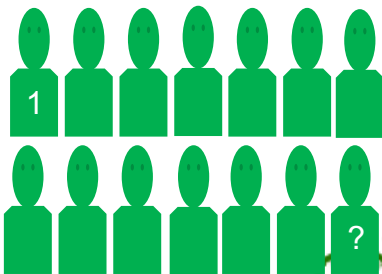
**Contact us:** [reviews@lgbce.org.uk](mailto:reviews@lgbce.org.uk)

# When



**Website:** [www.lgbce.org.uk](http://www.lgbce.org.uk)  
**Have your say:** [consultation.lgbce.org.uk](http://consultation.lgbce.org.uk)  
**Follow us:** @lgbce  
**Contact us:** [reviews@lgbce.org.uk](mailto:reviews@lgbce.org.uk)

# The Local Government Boundary Commission



Website: [www.lgbce.org.uk](http://www.lgbce.org.uk)  
Have your say: [consultation.lgbce.org.uk](http://consultation.lgbce.org.uk)  
Follow us: @lgbce  
Contact us: [reviews@lgbce.org.uk](mailto:reviews@lgbce.org.uk)

## Statutory criteria

- Electoral equality
  - Optimum number of electors per councillor
  - Five year forecast
- Community identity
  - Parishes as building blocks
  - Strong boundaries
  - Public facilities
  - Focus on community interaction
- Effective and convenient local government
  - Coherent wards with good internal transport links

The  
Local Government  
Boundary Commission  
for England

	Councillors = 50	Electorate = 100,000	Average Electors per Councillor = 2,000
-10% variance		Electoral equality	+ 10% variance
1,800	1 councillor ward	2,000 electors	2,200
3,600	2 councillor ward	4,000 electors	4,400
5,400	3 councillor ward	6,000 electors	6,600

Strength of evidence required

Website: [www.lgbce.org.uk](http://www.lgbce.org.uk)  
Have your say: [consultation.lgbce.org.uk](http://consultation.lgbce.org.uk)

Follow us: @lgbce  
Contact us: [reviews@lgbce.org.uk](mailto:reviews@lgbce.org.uk)



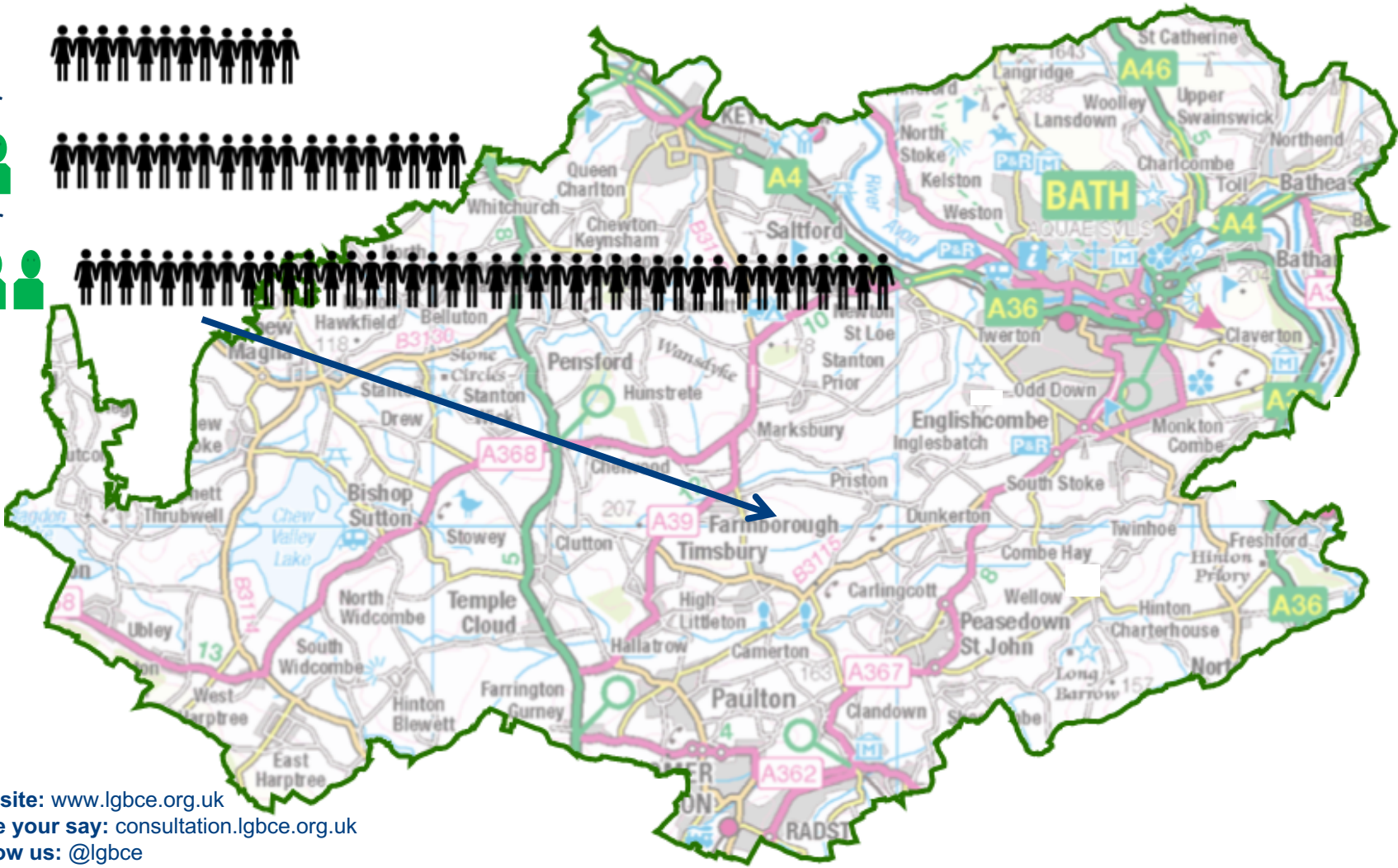
# The Local Government Boundary Commission for England



and/or

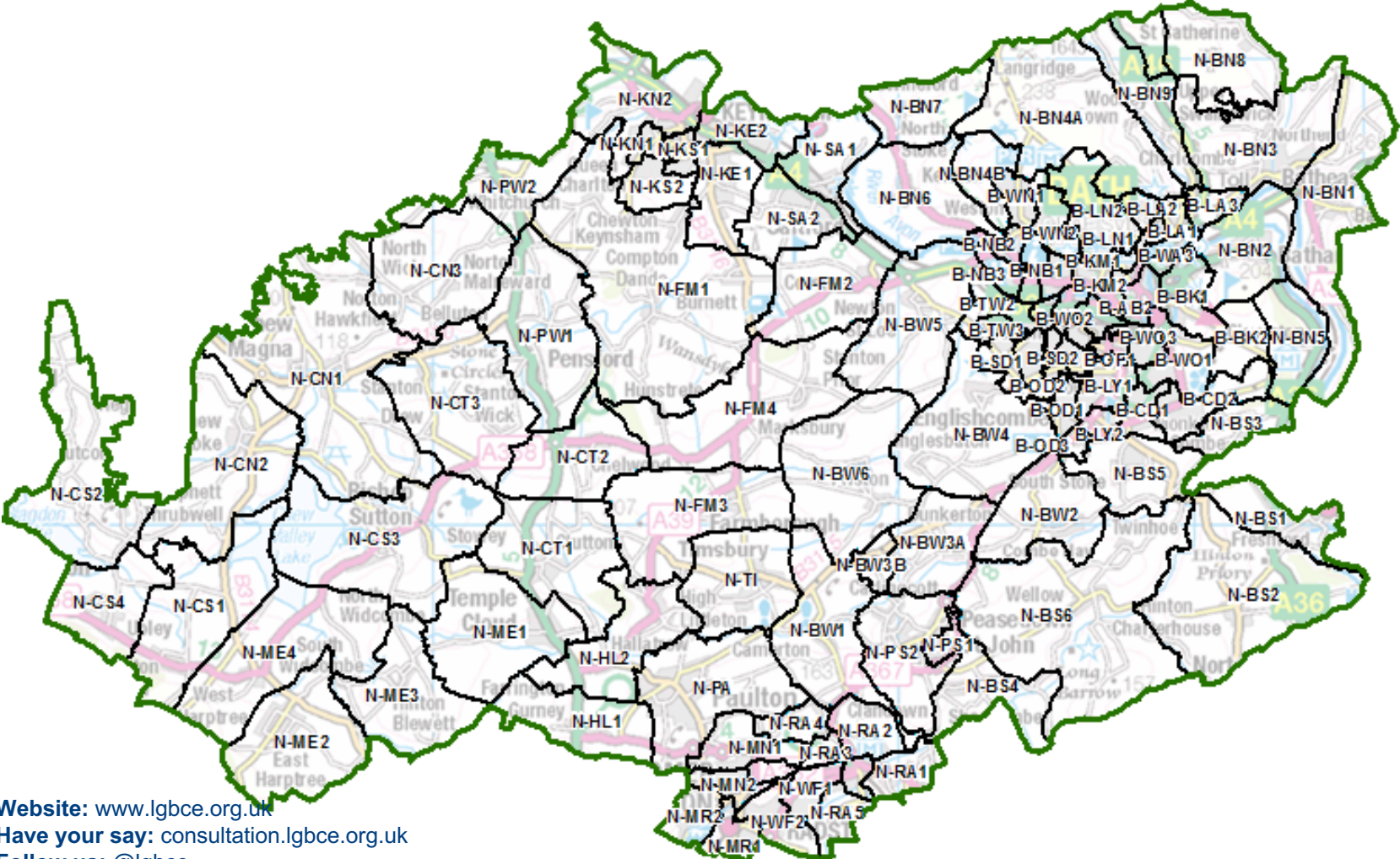


and/or



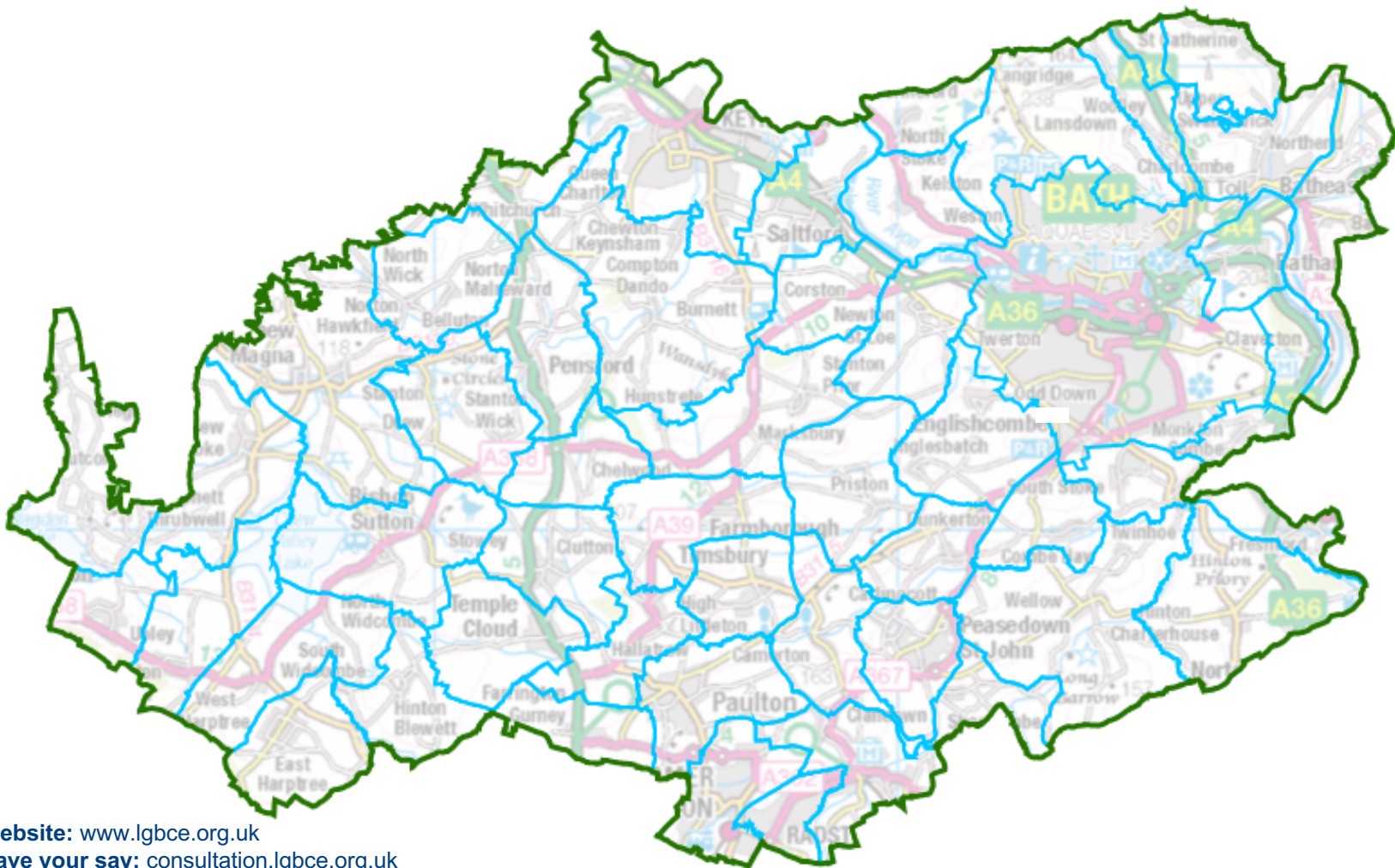
Website: [www.lgbce.org.uk](http://www.lgbce.org.uk)  
Have your say: [consultation.lgbce.org.uk](http://consultation.lgbce.org.uk)  
Follow us: @lgbce  
Contact us: [reviews@lgbce.org.uk](mailto:reviews@lgbce.org.uk)

# The Local Government Boundary Commission for England



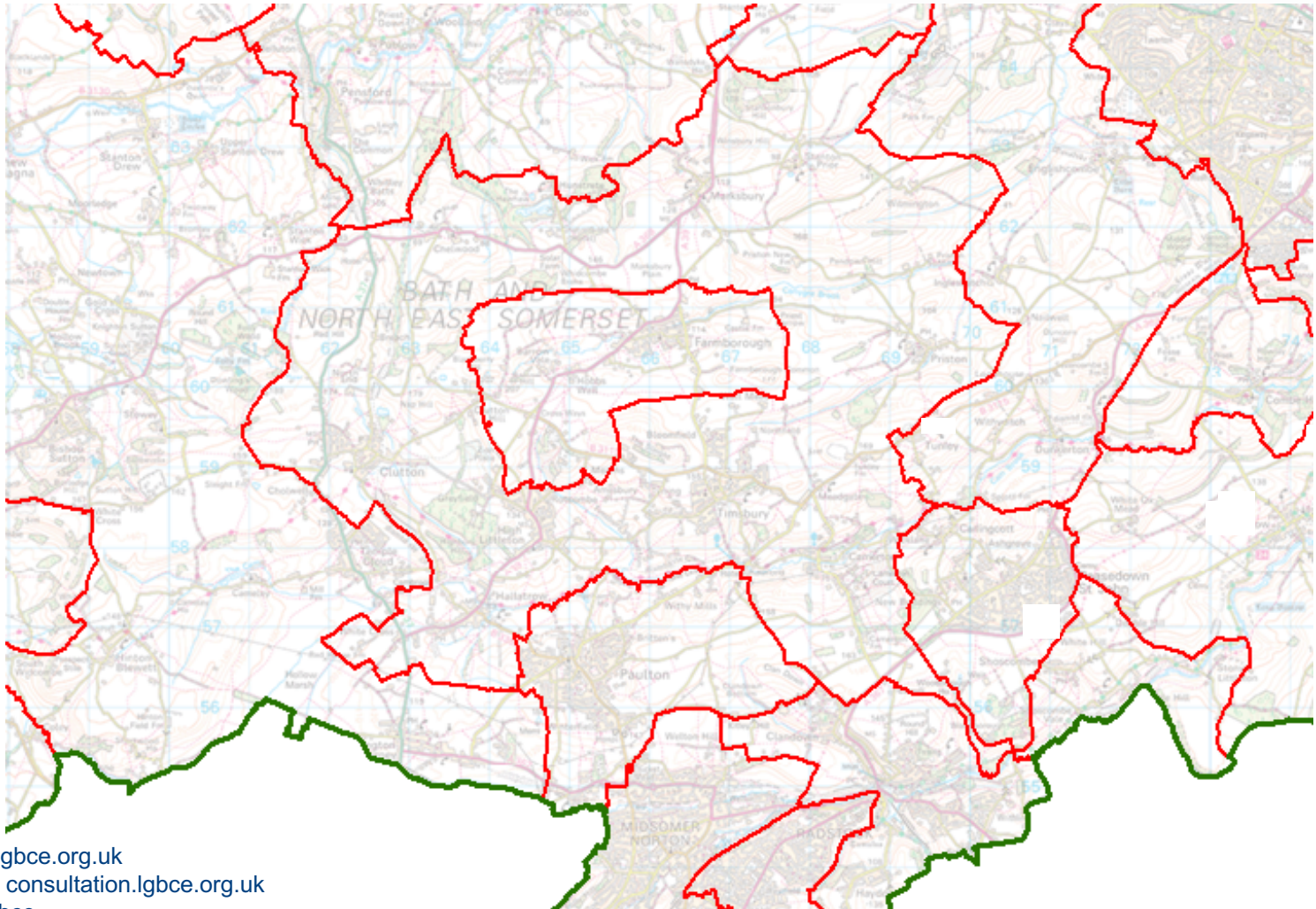
**Website:** [www.lgbce.org.uk](http://www.lgbce.org.uk)  
**Have your say:** [consultation.lgbce.org.uk](http://consultation.lgbce.org.uk)  
**Follow us:** @lgbce  
**Contact us:** [reviews@lgbce.org.uk](mailto:reviews@lgbce.org.uk)

The  
Local Government  
Boundary Commission  
for England



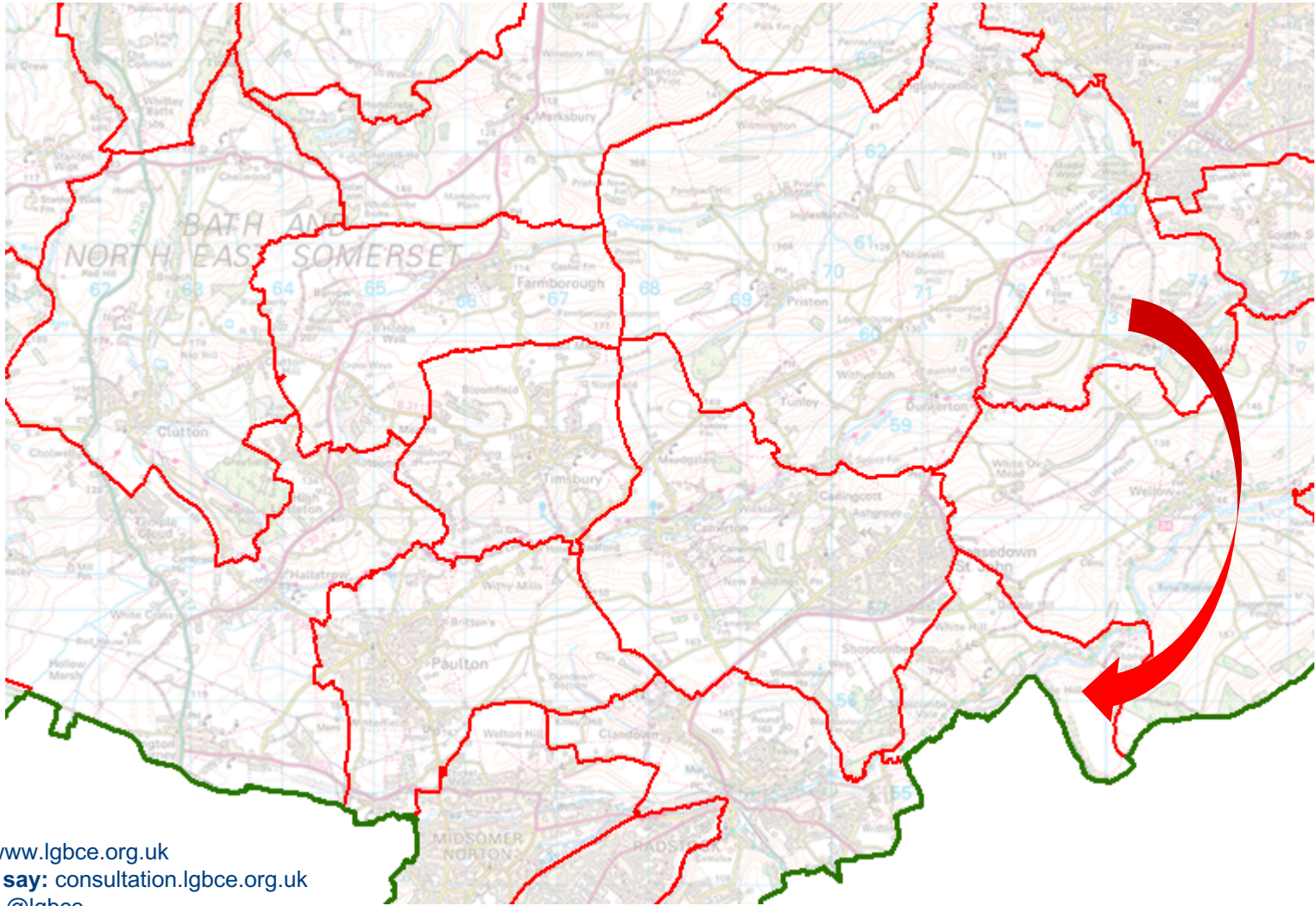
**Website:** [www.lgbce.org.uk](http://www.lgbce.org.uk)  
**Have your say:** [consultation.lgbce.org.uk](http://consultation.lgbce.org.uk)  
**Follow us:** @lgbce  
**Contact us:** [reviews@lgbce.org.uk](mailto:reviews@lgbce.org.uk)

## Doughnut wards



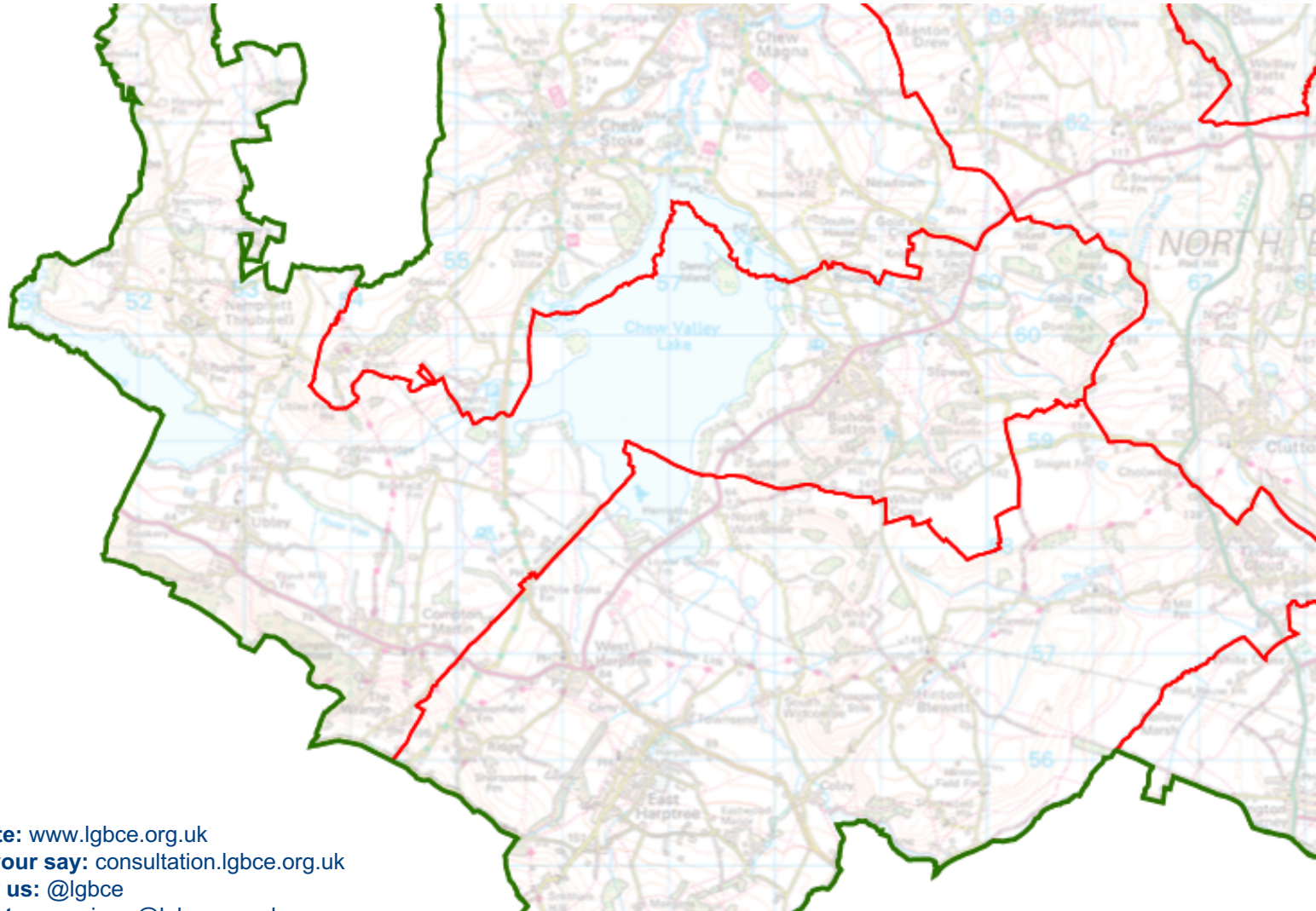
**Website:** [www.lgbce.org.uk](http://www.lgbce.org.uk)  
**Have your say:** [consultation.lgbce.org.uk](http://consultation.lgbce.org.uk)  
**Follow us:** @lgbce  
**Contact us:** [reviews@lgbce.org.uk](mailto:reviews@lgbce.org.uk)

# Detached wards



**Website:** [www.lgbce.org.uk](http://www.lgbce.org.uk)  
**Have your say:** [consultation.lgbce.org.uk](http://consultation.lgbce.org.uk)  
**Follow us:** @lgbce  
**Contact us:** [reviews@lgbce.org.uk](mailto:reviews@lgbce.org.uk)

## Coherent wards



# Effective representations

## Do not consider:

- Political consequences
- It's not broke don't fix it
- Parliamentary boundaries
- Postcodes or addresses

## What we want:

- Rationale not assertion
- What you do and don't like
- Put forward an alternative
- Practical community examples
- Reflect the statutory criteria

**Website:** [www.lgbce.org.uk](http://www.lgbce.org.uk)

**Have your say:** [consultation.lgbce.org.uk](http://consultation.lgbce.org.uk)

**Follow us:** @lgbce

**Contact us:** [reviews@lgbce.org.uk](mailto:reviews@lgbce.org.uk)

## Points to remember

- You may have good reasons for proposing something – tell us what they are
- Others may propose something different – and give us their reasons
- Our recommendations need to balance statutory considerations – not select from them

**Website:** [www.lgbce.org.uk](http://www.lgbce.org.uk)

**Have your say:** [consultation.lgbce.org.uk](http://consultation.lgbce.org.uk)

**Follow us:** @lgbce

**Contact us:** [reviews@lgbce.org.uk](mailto:reviews@lgbce.org.uk)